



Mod. **NEXT F.**

**TRINCIA - BROYEUR - SHREDDER - HÄCKSLER  
DES BROZADORA - ИЗМЕЛЬЧИТЕЛЬ**



Per la trinciatura di erba, residui di potature medio-leggere, residui vegetali in generale



Pour le broyage des herbes, sarments légers-moyennes, résidus végétaux en general



For the chopping of grass, light-medium prunings, vegetal residuals in general



Für das Häckseln von Gras/Weideflächen, leicht oder mittel Baumschnitte, Pflanzenresten im Allgemein


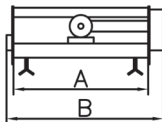


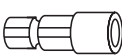



Para trinchar hierbas, residuos de poda medio-ligeros, restos vegetales en general



Для измельчения травы, остатков срезанных веток средне-легких, растительных остатков



NEXT F.										
	Kg.	LBS	A mm.	B mm.	A inches	B inches	N.	HP	PTO	N.
800	245	540	814	960	32,04	37,80	10	20-60	540	3
1000	275	606	1027	1173	40,43	46,18	14	20-60	540	3
1200	300	661	1240	1386	48,81	54,57	16	20-60	540	3
1350	330	727	1382	1528	54,40	60,16	18	20-60	540	3
1500	360	793	1524	1670	60,00	65,75	20	20-60	540	3
1800	400	881	1808	1989	71,18	78,31	24	20-60	540	3



- Rullo posteriore
- Perna filettati con dado
- Controcoltello



- Rouleau arrière
- Axes filetés avec écrou
- Contre couteau



- Rear roller
- Axles with nut
- Counterblade



- Hinterer Walze
- Gewindebolzen mit Muttern
- Gegenmesser



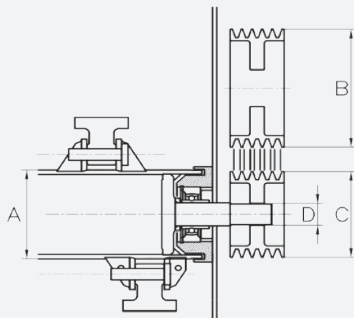
- Rodillo posterior
- Pernosroscado con tuerca
- Contracuchilla





- Заднегокатка
- Штырирезьбойс гайкой
- Контрлезвие на болтах

## ROTOR 2250 RPM

- A) Ø mm. 140 inches 5,51
- B) Ø mm. 200 inches 7,87
- C) Ø mm. 160 inches 6,30
- D) Ø mm. 40 inches 1,57



NEXT FISSO	 mm	 inches
800	407 407	16.02 16.02
1000	407 407	16.02 16.02
1200	407 407	16.02 16.02
1350	691 691 400 982	27.20 27.20 15,75 38,66
1500	762 762 400 1124	30,00 30,00 15,75 44,25
1800	765 1043 400 1408	30,12 41,06 15,75 55,43

## OPZIONE OPTION OPTION OPTION OPCIÓN ОПЦИЯ



- Coppia slitte fisse
- Couple patins fixes
- Pair of fix skids
- Paar feste Kufen
- Par patines fijos
- Парафиксированныхлыж

- Coppia ruote anteriori in ferro Ø 190
- Couple de roues antérieures en fer Ø 190
- Pair of front iron supporting wheels Ø 190
- Paar Vorderräder aus Eisen Ø 190
- Par de ruedas anteriores en hierro Ø 190
- Пара передних металлических колес Ø 190



- Denti di raccolta
- Râteau arrière
- Rear rake
- Satz Sammelzinken
- Dientes de rastrillo
- Зубья для сбора




Via Proventa, 41  
48018 Faenza (Italia)  
Tel. +39 0546 29050  
Fax +39 0546 663986

www.falc.eu | info@falc.eu