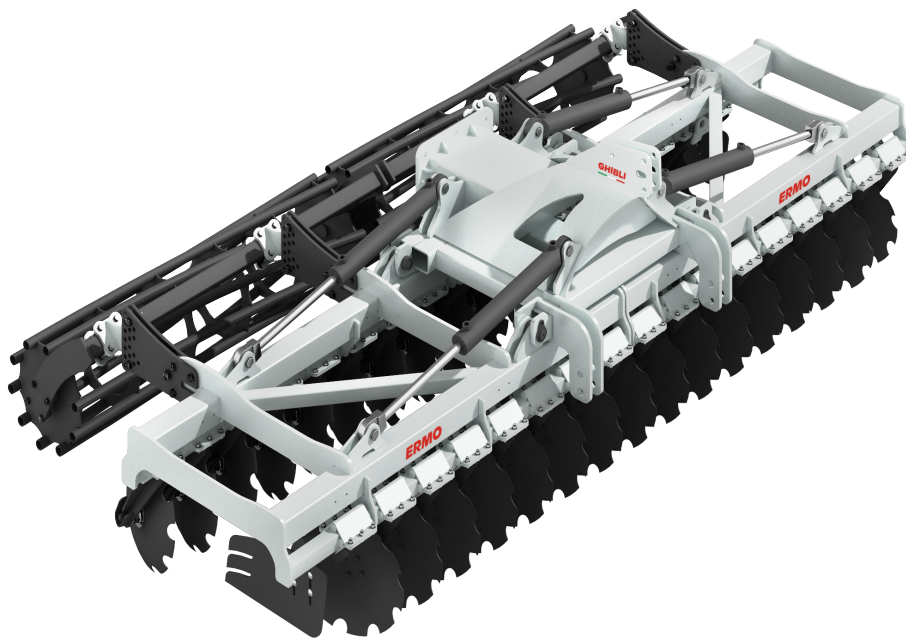


**ERMO**

# **GHIBLI**

Disc cultivator



+ 39 0374 364111

info@ermo.it

www.ermo.it



# Minimum tillage

GHIBLI is the best option to prepare the seedbed. This machine is ideal for speed, low deep and intensive works in order to perfectly mix the stubbles. GHIBLI respects the environment, indeed it is also used for conservative farming. This machine is also characterized by low maintenance costs; the hubs are leakproof and mounted on rubber Silent Block. The features of our disc cultivator allow to work rocky and not levelled soils.

## GHIBLI | FIX FRAME

### Basic technical details|

Toothed discs Ø 560 mm x 5 mm. Distance between the row of disc: 900 mm  
Hubs of Ø 35 mm (SKF)  
Single beam frame 200x100 mm in strong steel  
Silent bock Ø 40mm  
Lateral side plates to contain clods included.  
Main fix frame 200x100x8 mm  
Tubolar for discs support 80x80x8 mm

Model	N° discs	Power [hp]	Working width [cm]
GHIBLI 250	20	100 130	250
GHIBLI 300	24	130 160	300
GHIBLI 400	32	150 200	400

## GHIBLI | FOLDABLE FRAME

### Basic technical details|

Toothed discs Ø 560 mm x 5 mm. Distance between the row of disc: 1000 mm  
Hubs of Ø 35 mm (SKF)  
Single beam frame 200x100 mm in strong steel  
Silent bock Ø 40mm  
Lateral side plates to contain clods included.  
Foldable frame made of double tubolar 120x120x8 mm  
Tubolar for discs support 80x80x8 mm

Model	N° discs	Power [hp]	Working width [cm]
GHIBLI 400F	32	150 200	400
GHIBLI 450F	36	150 200	450
GHIBLI 500F	40	180 250	500
GHIBLI 600F	48	200 350	600

Standard weight of machines and optional may vary

# | Rollers

**CAGE ROLLER:** the cage roller is perfect for light and non-stony soils in dry conditions. It slacks the soil and creates the best conditions for sowing.

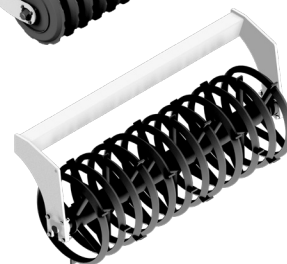
**SHELL ROLLER:** shell roller is perfect for heavy and arduous soils. Its rigidly fixed knives cut large clod scompacting the soil.

**ANGLE ROLLER:** the angle roller strengthens the soil in strips, breaks the lumps, and creates better conditions for the soil infiltration.

**RUBBER ROLLER:** its rubber rings and scrapers eliminate the clogging from the roller. The discs have a diameter of 500 mm. The small rolling resistance allow to not compact the soil even at low operating speed.

**DOUBLE U ROLLER:** the soils this roller has "U profiles" which are closed by the soil, this preserves the roller and avoids the creation of a compact superficial layer. The double U roller is perfect for the preparation of the soil and for the mulching.

**DOUBLE T ROLLER:** due to its particular shape, the double T roller divides the soils in strips. Because of its profiles, this roller it's perfect for hard soils.



# Optionals

Accessories are available for both fixed and foldable GHIBLI:

**DOUBLE FRONT WHEELS:** The double front wheels give greater stability and improve the uniformity of tillage.

**LATERAL SIDE PLATES TO CONTAIN CLODS:** Placed laterally they allow to contain the clods that are raised during the working, avoiding that they splash into the soil already worked.

**ROW OF IMPAC ARROWS:** The row of impact arrows, interposed between the last row of discs and the roller, allows to smooth the crop residues that are then compacted by the roller.

**LIGHTS FOR TRANSPORT:** Mandatory for public road transport, the light bar is available on request.

**HYDRAULIC REGULATION OF REAR ROLLER:** In the standard version the roller is supplied with hydraulic lifting and with mechanical depth adjustment. On request, hydraulic roller depth adjustment is available.

**KIT FOR TRAILED VERSION:** drawbar and carriage with double wheel. In the standard version the GHIBLI is available in the delivered version. On request is available the trailed version with front drawbar and carriage for road transport.

